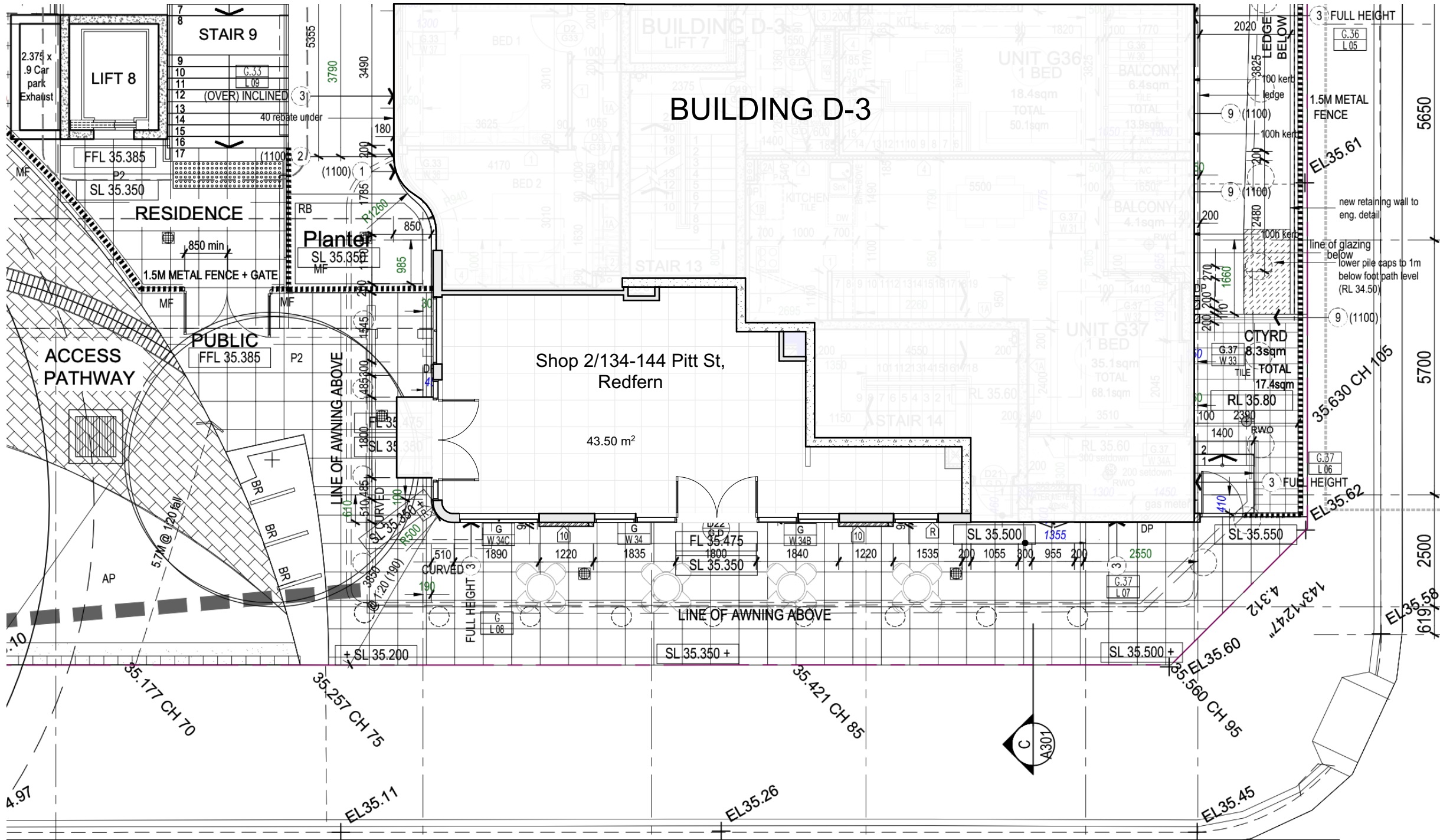


Attachment B

Selected Drawings



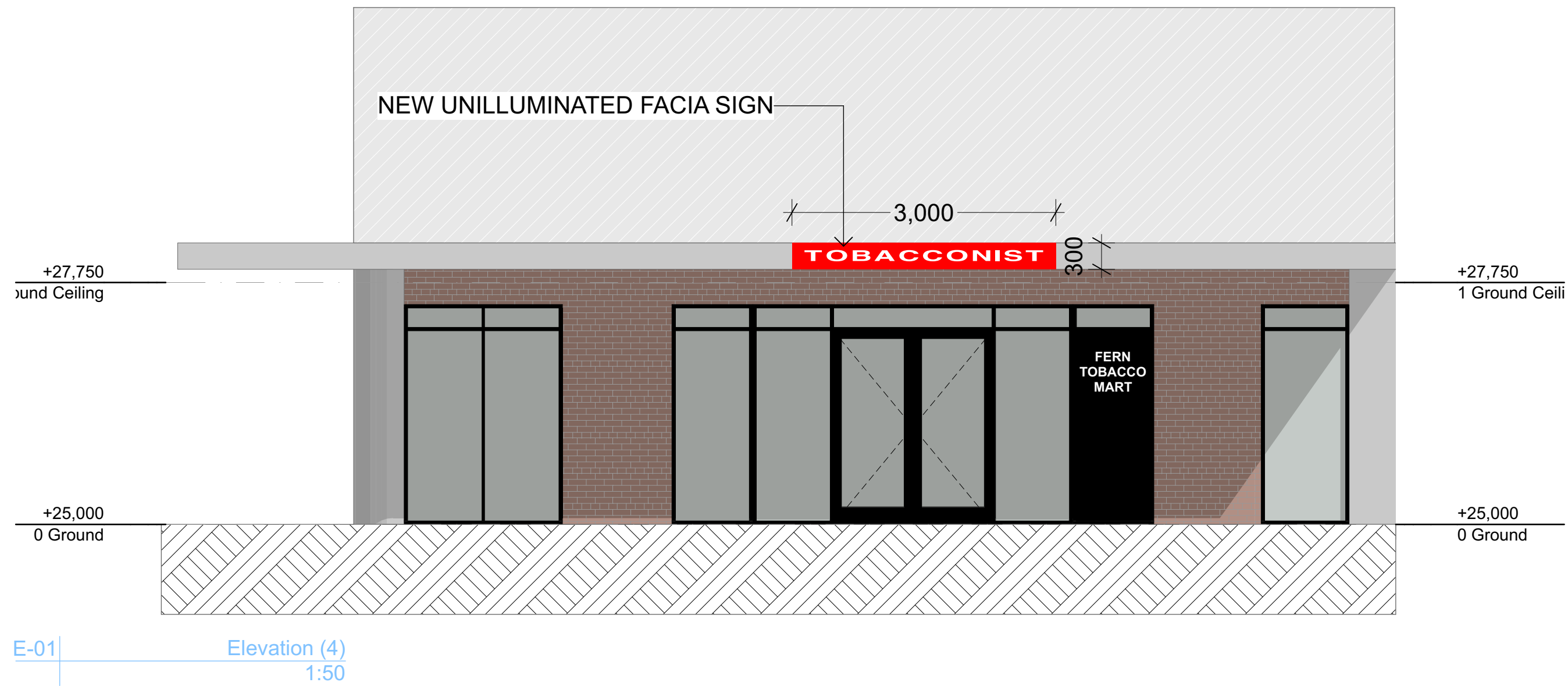
ALBERT STREET

PITT STREET

0. Ground (16)
1:100

ISSUED FOR DA





NOTE: NO ILLUMINATION FROM STORE IS TO BE DIRECTED TOWARDS UPPER LEVELS OF BUILDING.

City of Sydney Convenience Store Development Control Plan 2004

4.1.3 Controls for signage and illumination

Illumination from the convenience store, when measured from any place in the public domain is not to exceed:

- a maximum horizontal illuminance level of 220 lux (includes reflectivity of exterior finishes); and
- for the remainder of the local government area, a maximum horizontal illuminance level of 200 lux (includes reflectivity of exterior finishes); and
- the horizontal illuminance uniformity ratio (Eavg/Emin) of 4:1 to ensure safe movement of pedestrians; and
- the intensity, colour, period of intermittency and hours of illumination of convenience stores and associated signage shall be varied if, at any time in the opinion of the consent authority, adverse impact is being caused to the amenity of the area; and
- where nearby residents are located above the level of the store, details are to be provided to show that light is not directed upwards toward such residences.

ISSUED FOR DA